

Opportunities for Young People with Education,
Health and Care Plans in Birmingham

POST 16

Transition Booklet 2019

To download an electronic version visit:
www.birmingham.gov.uk/localoffer



A great city to grow up in

Introduction

Transition to Post 16 Placement for Students with an Education, Health and Care (EHC) Plans in Birmingham 2019

Dear Student or Parent / Carer of a Young Person with an EHC Plan

This booklet has been put together for all young people who have an Education Health and Care (EHC) Plan to help them through Post 16 transition. It includes information about educational settings in Birmingham and explains how young people can express a preference for the placements that they wish to attend.

The main stages involved in the Post 16 process are:

- students and parents / carers attend an Annual Review Meeting to discuss their options
- students and parent / carers attend open days and apply to colleges
- complete and return the preference form by 03/09/18 so that we can consult providers
- in February 2019, each student will receive a letter proposing a post 16 placement
- A final EHC Plan, identifying the allocated placement will be issued by 31st March 2019.

Most young people with an EHC Plan attend local Post 16 placements where their needs are met by the education, training and support provided. If a young person is considering a placement at a local mainstream college or sixth form, sections 22 & 30 of this booklet provides details about these placement options. Information about specialist placements are detailed in sections 23, 24 and 25 of the booklet. For young people who are seeking work (vocational) based training, section 28 of this booklet will give them more details of relevant providers.

We have also created a user friendly document called 'Next Steps' to help young people through this process. Young people from Y10 onwards will have been given advice on the type of placements that are suitable through discussions with their current placement at their annual review meeting. A young person interested in a particular placement will need to contact the college or provider directly to arrange a visit; as well as completing and returning the form included in this pack, students should also apply directly to the Post 16 setting for a place.

Students should also seek support from the Special Education Needs Co-ordinator (SENCo) and Careers Adviser at their current placement. This will help them make an informed decision about their future placement and express suitable preferences.

If, after reading this booklet, you still need further help or advice then you can contact the Local Authority's (LA's) Special Educational Needs Assessment & Review Team (SENAR) on (0121) 303 4175 (North & West) or 303 5489 (East & South).

I wish each young person every success in the future.

Yours sincerely



David Bridgman
Head of Service
SENAR

Contents

Introduction by David Bridgman, Head of Service, SENAR	2
1. Timeline for the SEN Post 16 transfer process	4
2. How the Post 16 transfer process will work	5
3. Meeting a young person's needs	6
4. Finding out about Birmingham placements	7
5. Who should complete a preference form	7
6. Not submitting a preference form	7
7. How to complete the preference form	8
8. Applying for a Post 16 placement in other Local Authorities	9
9. Applying for an Independent Specialist Provider (ISP)	10
10. Transitions into Adulthood (Adult Services)	12
11. Home address	13
12. How places are allocated	14
13. Notifying you of the allocated placement	15
14. Appeals and amendments	15
15. Special Education Needs and Disability Information, Advice and Support Service (SENDIASS)	15
16. Travel Assist	16
17. Raising Participation Age (RPA)	17
18. Careers Advice and Information/Support	18
19. Not in Education, Employment or Training in Birmingham (NEET)	19
20. How do qualifications compare?	20
21. Contacts	21
22. Details of Mainstream Secondary Schools with Sixth Form Centres	24
23. Post 16 Specialist Vocational Colleges	34
24. Details of Special Sixth Form Centres	35
25. Resource Bases	39
26. Independent Specialist Providers in Birmingham (ISP)	41
27. Specialist Post 19 Providers	42
28. Vocational Training Providers in Birmingham	43
29. List of courses available at Vocational Training Providers	45
30. General Further Education (GFEs) & Sixth Form Colleges	47
31. Open Days	51
32. List of courses available at GFE Colleges	52
33. Our guide to data protection	59
34. The Career Action Plan	61

1. Timeline for the SEN Post 16 transfer process

Which?	What Happens?
Summer Term 2018 onwards	<ol style="list-style-type: none"> 1. Attend open days at appropriate Post 16 placements and apply directly to the setting. 2. The colleges need to inform SENAR of all applications received from young people with an EHCP.
By 3rd September 2018	<ol style="list-style-type: none"> 1. School Careers Adviser arranges a full careers guidance interview and issues a Career Action Plan for all those with an EHC Plan (the template to be completed is on www.birmingham.gov.uk/localoffer) 2. School / Placement SENCO arranges the Annual Review meeting in order to complete the Annual Review form/ make changes to the EHCP. 3. Student / Parent / Carer completes the Post 16 Preference Form and sends to LA. 4. The current school / placement sends the populated EHC template, Career Action plan, up-to-date school reports, Annual Review Report form and the student's Preference Form to SENAR.Transfers@birmingham.gov.uk.
Between 3rd September 2018 & 8 February 2019	SENAR will consult with placements about student's preferred options. SENAR will also consult with other appropriate placements that are in the student's local community if necessary.
Week beginning 11th February 2019	A Notice of Amendment and a letter of intent will be sent out, identifying any proposed amendments to the EHC Plan and the intended Post 16 setting to be named in Section I of the EHC Plan. You will have 15 days to make written representations to the proposals.
On 29th March 2019	Final or amended final EHC Plan will be issued to name the young person's allocated Post 16 provision for September 2019.

2. How the Post 16 transfer process will work

A young person who has an EHC Plan and is due to move on to a Post 16 placement (e.g. college) in September 2019, will have the opportunity to state their placement preference(s) using the Preference Form provide with this booklet.

What they need to do:

- A young person who is resident in Birmingham must complete a Birmingham LA Preference Form specifically for learners with an EHC Plan.
- If any of their preferences are for a placement in another LA they must still complete the Birmingham LA Preference Form and name the placement(s) in Part 3 of the form.
- Birmingham LA is required to consult a Post 16 placement, before it can be named in their EHC Plan.
- Post 16 placements will be allocated in accordance with the SEN Code of Practice 2015 and the criteria set out in this booklet.
- Each young person will be given the opportunity to make representations and to discuss any concerns they have with their SENAR Officer, whose name and contact details will be in their notification letter, about the place allocated.
- If a young person or their guardian disagrees with the offer, they can appeal to the SEND Tribunal Service. The contact details will be included in the letter sent with their Final Amended EHC Plan.

Please note:

The Children and Family Act 2014 states that, when amending an EHC Plan, LAs must make arrangements to enable young people to say where they would prefer to receive their Post 16 education or training.

However, the number of places in all settings, are limited, therefore, it may not always be possible to allocate students a place at their preferred placement.

To maximize a student's opportunities for a preferred placement being allocated we recommend four preferences are stated on the preference form.

Birmingham LA must comply with a young person's preference for a local college or sixth form unless:

- The placement is unsuitable to their age, ability, aptitude or SEN, or
- The placement would be incompatible with the efficient education of the other young people with whom they would be educated, or
- The placement would be incompatible with the efficient use of resources.

3. Meeting a young person's needs

Birmingham LA aims to provide students who have EHC Plans, with a range of opportunities in Post 16 to appropriately meet their needs.

We are committed to a policy of inclusion which means educating young people in the most appropriate provision and in accordance with their needs. Birmingham LA believes in the principle of students being educated / trained in their local community, as close to home as possible.

There are different types of mainstream Post 16 placements in Birmingham including:

- Local General Further Education colleges (GFEs)
- Mainstream Sixth Forms Colleges and School Sixth Forms

Some sixth forms have become Academies and are not controlled by the LA but have similar admission procedures. Some Free Schools have also been opened or are due to open in the City. These are not controlled by the LA, but operate separate but similar admission procedures to mainstream sixth form schools.

More specialist types of provision:

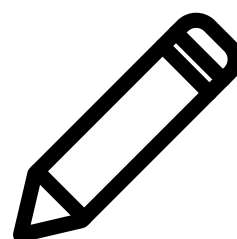
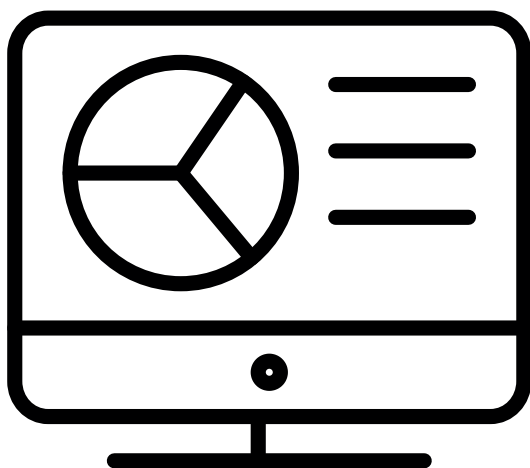
In addition to mainstream placements, there are 14 Special School Sixth Forms (three are co-located on mainstream secondary school sites). There are also 4 Resource Bases within mainstream schools that offer a range of specialist educational provision for different types of need.

The specialist provision available in the city caters for the following SEN:

- Cognition and Learning Needs (CLN)-including sensory and physical disability.
- Autistic Spectrum Conditions (ASC)
- Visual Impairment (VI)
- Hearing Impairment (HI)

There are also a number of Independent Specialist Providers meeting a variety of specialist needs. For more information see:

<https://www.gov.uk/government/publications/independent-special-schools-and-colleges>



4. Finding out about Birmingham placements

All General Further Education (GFE) Colleges, Sixth Forms and special Post 16 placements have their own prospectus or booklet that explains what subjects/courses they offer, the facilities they have and what they aim to provide for their students. Your son / daughter will need to contact these providers directly to request a copy. However, many educational establishments will have a copy of the prospectus on their website to download.

Further information can also be found on the Local Offer website at:
www.birmingham.org.uk/localoffer

Open Days

It's a good idea to go along to open days so students and parents / carers can talk to tutors and explore choices before making their decision. Check college websites and Social Media for details of open days.

See Section 31 for information about open days.

5. Who should complete the preference form?

All students from who will be in Y11 onwards on 01/09/2018 need to complete a preference form in order that we can consult with the necessary providers, amend their EHC Plan as appropriate and arrange for any agreed necessary funding to be put in place.

If a student who is aged 18 or over on 31/08/2019 no longer wishes to continue in education they must complete section 2 of the preference form, stating that they are either planning to leave education, start University or begin work. These student's EHC Plans will then cease at the end of the academic year in August 2019.

Students who are not yet 18 years old by 31/8/2019, must continue in some form of education or training and their EHC Plan must remain in place. Therefore, if we do not receive a preference form the EHC Plan will remain in place but no specific provision will be named in the plan. These students will be encouraged to re-engage in education and training and should contact SENAR as soon as they are ready to undertake an educational or vocational training course. A SENAR Officer will then make consultations with the relevant providers with a view to a setting being named in their EHC Plan and them continuing to access education.

6. Not submitting a Preference Form

All students should submit a preference form even if they are remaining in their current placement, as the LA still need to ensure that their EHC Plan is up to date and any placement funding where necessary has been applied for and is in place for the next academic year.

If a student who is aged 18 or over on 31/08/2019 does not return a preference form, the LA will assume that the young person no longer wishes to continue in education and training and the EHC Plan will cease at the end of the 2018 / 2019 academic year. Please be aware that this will mean that no placement will be secured and no funding will be available from September 2019.

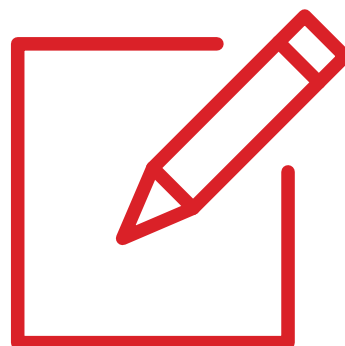
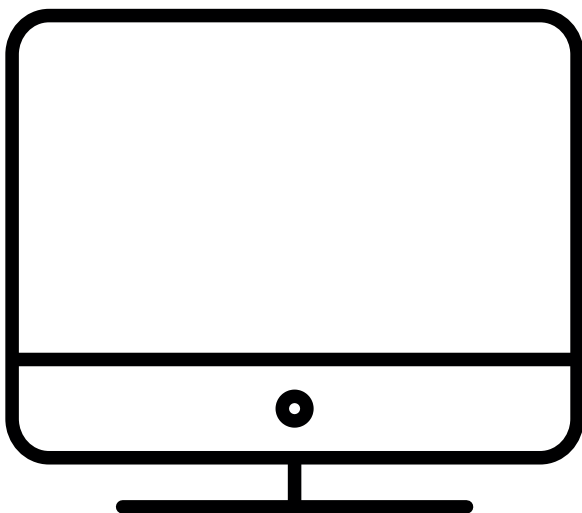
Therefore, if any student does wish to continue, they must complete and return a preference form.

7. How to complete the preference form

- Complete the form in BLOCK CAPITALS using black ink.
- PART 1: Check that the student's details in Part 1 of the form are correct.
- PART 1: If the pre-printed address is incorrect, write the correct address in the space provided and attach proof of residence, such as a recent utility bill, by stapling it to the form.
- PART 2: If a student intends to leave education to attend university or begin work please complete Part 2 and move onto Part 6.
- PART 3: Enter the names of placements in the order of preference, starting with the most preferred choice, including any preferences for placements in other Local Authorities.
- PART 3: If any of the preferences are for a place in a Resource Base, rather than the mainstream part of a school, please write 'Resource Base' next to the name of the placement on the form.
- PART 3: If a college has multiple campuses, please provide the name of the campus that a student wishes to attend. Please also include the name and level of course they wish to enroll on.
- PART 4: Please include the Career Action Plan and any other information that is relevant to a preference. Attach additional sheets, by staple to the back of the form.
- PART 4: Complete the young person in care details as applicable.
- PART 5: Make sure the relevant boxes are ticked in this part.
- PART 6: Fully complete the parent / carer / guardian details.
- PART 6: Sign & date the declaration.

The deadline for the completed form to reach SENAR is 3rd September 2018. You can either return it to the current school / placement's SENCO or you can send it directly to SENAR preferably via email to SENAR. Transfers@birmingham.gov.uk or by post to the address below.

SENAR (LC), PO Box 16289, Birmingham, B2 2XN



8. Applying for a Post 16 placement in other Local Authorities

If a young person lives in Birmingham and any of their preferences are in another LA, then they still need to state them on the Preference Form. Birmingham LA is required to consult with the placement and, if applicable, the other LA regarding a placement on the student's behalf (special school 6th forms and resource bases).

Remember, other LAs may not be able to offer a place, because the placement is full for example, or they do not feel they can meet needs. Therefore, it is also advisable to include some Birmingham placements in the preferences.

9. Applying for an Independent Specialist Provider (ISP)

For the majority of young people who have Special Educational Needs and / or a Disability (SEND), education and training provision will be delivered in a mainstream setting. Outcomes for the vast majority of young people, including those with SEND, will be met most effectively when they are able to maintain their connections with their families, their friends and communities.

It is important to note that the LA is required to take into account funding considerations when making ISP educational placement decisions and can refuse if a placement is:

- Unsuitable to a young person's age, ability, aptitude or SEN
- or be incompatible with the efficient education of other young people with whom they would be educated
- or with the efficient use of resources (Code of Practice 2015)

The LA will not confirm funding and commissioning decisions until the full costs and affordability of an educational placement have been considered in the light of the overall budget available. The total costs of the placement may include the additional social care and health costs that might be needed.

In considering and securing an education programme, and with a view to an efficient use of funds, the LA may look at pooling resources between different agencies; encouraging the formation of partnerships and building community capacity to secure appropriate funding from other agencies during the decision making process.

The LA will liaise with other agencies / service areas to request funding to cover any health and care costs associated with the placement. **However, the LA cannot guarantee that such funding will be forthcoming.**

In the event that a local package of provision and support cannot be identified a decision will be sought from the relevant LA Panel which will consider cases in good time in order to meet the deadline of 31st March 2019.

To fund a day ISP placement the LA will need to be satisfied, on the basis of the available evidence that the majority of criteria below are met:

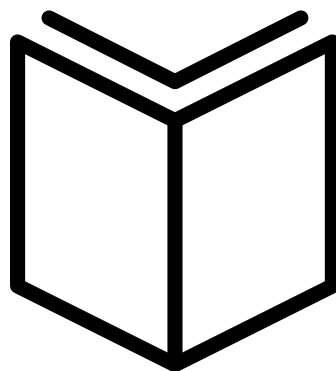
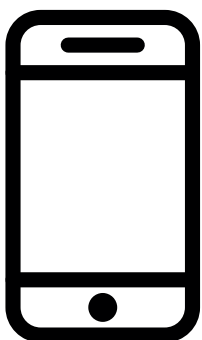
- There is no suitable local mainstream provision or package of provision that can meet the student's reasonable education or training needs.
- There is evidence that the student has medical or care needs that cannot be addressed by local providers and that would prevent the students from accessing suitable education or training.
- The independent specialist provider is appropriate to the student's needs.
- The programme proposed for the student, includes progression pathways and clear outcomes and identified destinations in line with the student's preparation for adulthood.

Additionally, requests for residential placements must also evidence that the assessment of the student's reasonable education or training needs demonstrates that an essential element can only be provided in a residential setting and that other provision or packages of provision cannot meet those needs.

It is essential therefore, that the evidence provided in support of any placement request is up to date (within last 12 months) and appropriate to the request being made. Evidence will need to demonstrate that the match between the aspirations of the student, their identified reasonable education and training needs and the learning programme is only available through an ISP. Sources of the evidence include:

Required evidence is as follows:

- EHC Plan.
- Careers Action Plan – see section 33.
- Relevant and up to date report(s) from the Multi-Agency Team around the student who have assessed the student and concluded they cannot put in place or source a suitable package of provision and support to meet the student's educational and / or training needs.
- A report from the ISP detailing how the provider can meet the student's reasonable assessed education and training needs set out in the EHC Plan.
- The Preference form – see section 6 which provides signed consent of the student to share information, as appropriate.



The list is not exhaustive and the LA may wish to seek additional relevant and up to date information depending on the individual circumstances of the student.

Whilst the LA will take account of the wishes of students and their parents / carers, it does not have a legal duty to fund a preferred independent specialist provision, if it is satisfied that it can secure adequate provision locally. The LA will automatically seek a view from an LA mainstream college or other local provider where an ISP application has been made, based on the preferences listed in Part 3 of a student's preference form. Where no mainstream provider has been listed the LA will seek a view from a local provider that it feels can meet the student's needs. The LA may also look to develop a personalised package of provision and support in a local setting(s) to meet the student's needs / aspirations.

Should the student and their parent / carer not be satisfied with the decision, they have the right to appeal against the decision and should follow the LA appeals process as set out in section 14.

Continuation of Placement for students already in ISP's:

Confirmation of continuing placements for existing students will be made on the basis of the annual review of progress for each student. This review will be undertaken by the ISP in partnership with the LA as appropriate and all reports will need to be with the LA by the end of July 2018. This is to enable the LA to meet the 31st March 2019 deadline. The LA may also look to develop a personalised package of provision and support in a local setting(s) to meet the student's needs / aspirations on a year by year basis.

Programme Length

Whilst it is acknowledged that the total length of an individual student's programme may be in excess of one year, the funding of a student's placement will only be confirmed for the duration of one academic year and continuation will be subject to on-going satisfactory progress, attendance and positive outcomes evidenced by annual review reports submitted by an ISP no later than the end of July 2018. Costs will also be reviewed on an annual basis.

It is expected that students complete their programme within the time frame initially agreed and requests to extend an individual student placement beyond the duration of the programme's original end date will only be granted in exceptional circumstances e.g. where a student has been unable to complete their learning aims due to exceptional and unexpected medical reasons.

In-year changes

Following identification of a change in support needs, requests to change a student's level of funding in-year (that is, at any time other than through the end of the first term review for new placements and the summer term review process for all students) are likely only to be considered in exceptional circumstances and evidenced by up to date reports. The changes must be discussed and agreed with the LA before amendments are put in place.

10. Transitions Into Adulthood (Adult Services)

When a student with a disability and / or with mental ill health becomes Post 19 and can no longer progress in an educational setting they can ask the Adults Transitions Team to look at their social care needs as an adult. In order to work out just what these needs are, the team needs to carry out an assessment.

This assessment is a thorough discussion with the young person and with their parent or carer and will usually take place during the summer term. This may also involve gathering information from other professionals who work with the student and know their situation well. The assessment will tell us if you need help.

How much does it cost?

Some adult services may have to be paid for, but the actual amount you pay will depend on what services you receive and how much income you receive and / or the capital you have.

You may qualify for financial support for social care services and be able to get help with the costs. We will help you fill out a financial assessment form to see if you qualify.

We may provide or arrange services for you but there are other ways of getting the support you need. In certain circumstances you can choose to have a Personal Budget and use the money that you receive from us to arrange your own support.

How to get in touch

If you are already receiving services as a young person then please speak to your Social Work team who arrange the service for you.

If you are under 18 and need help and support now, please contact Children Young People Families on: 0808 808 1001.

If you are 18 or over and you do not have a Social Worker, then contact The Adults and Communities Directorate.

For enquiries please email: acap@birmingham.gov.uk

For further information and guidance on the process visit: www.birmingham.gov.uk/info/20018/adult_social_care_and_health

To find Service Providers visit:

www.birmingham.gov.uk/info/20018/adult_social_care_and_health/135/care_centres_run_by_birmingham_city_council

11. Home Address

When completing the Preference Form, please note that the home address is the residential property where the young person resides for the majority of the school term. This can be either:

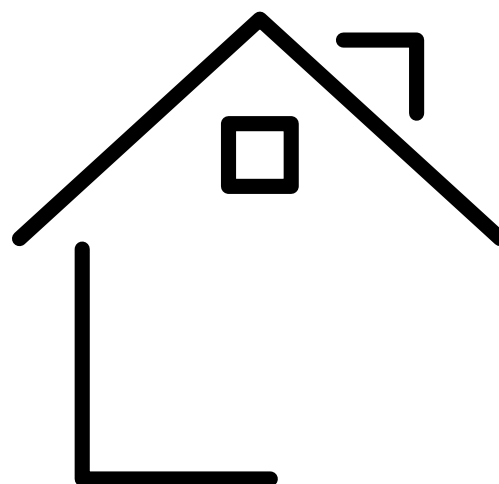
- Owned by a parent / carer or the person with parental responsibility.
- Leased to or rented by the parent / carer or a person with parental responsibility.

Different Home Address

If a young person's address is different to that printed on the Preference Form, please write the new address in the space provided and attach proof of residence, such as:

- A copy of the council tax bill.
- A copy of a recent utility bill (gas, water, electric etc. dated within the last six months).
- A Solicitors letter stating contracts have been exchanged and specifying a completion date and the new address.
- A copy of your tax credit award letter.
- A signed and dated tenancy agreement with the commencement date, plus proof of residency for example a copy of a recent utility bill.

If a placement is allocated on the basis of an address that is subsequently found to be different from the student's normal permanent home address, then that place is liable to be withdrawn.



12. How Places are Allocated

Post 16 places are allocated in accordance with the Children & Family Act 2014, which requires that a decision is made after taking into account the student's SEND, parental preference and the views of the placements requested.

The LA is required to comply with a student's preference for a local college (GFE), sixth form and / or 16-19 Academy unless:

- The placement is unsuitable to the student's age, ability, aptitude or SEN or
- The placement would be incompatible with the efficient education of the other young people with whom the student would be educated, or
- With the efficient use of resources.

The LA is required to consult the placement before naming it in Section I of the EHC Plan.

How the LA allocates places if there are more applications than places available:

In cases where there are more applications for places than a Specialist Placement can accommodate, places will be allocated on the basis that:

- The placement is able to meet the student's SEND and priority is given to a Student in care (see definition below) where the placement is the most appropriate placement for their SEND.

Definition of Looked After Children (in public care) or previously Looked After Children who were previously looked after but immediately after being looked after become subject to an adoption, residence or special guardianship order. This includes any young person who is subject to a Full Care Order, an interim Care Order, accommodated under Section 2D0 of the Children Act 1989, is remanded or detained into LA accommodation under Criminal Law or who has been placed for adoption.

- Young people for whom this particular placement is the only placement that can meet their specific SEND.
- In the event that there are still places available they will be allocated to young people whose SEND can only be met in this type of provision and it is the nearest placement to their home address.
- Any further places will be allocated to young people whose needs can appropriately be met at this type of provision, with priority given to those who live closest.

13. Notifying you of the allocated placement

A letter of intent, along with a Notice of Amendment, will be issued during the week commencing the 25th February 2019 informing the student and their parent / carer of the proposed school to be allocated. This will explain how to make representations to the LA if they disagree with, or have any concerns about the proposed Post 16 placement before a final or amended final EHC Plan is issued.

The LA is required to issue a final or an amended final EHC Plan by 31st March 2019.

14. Appeals and amendments

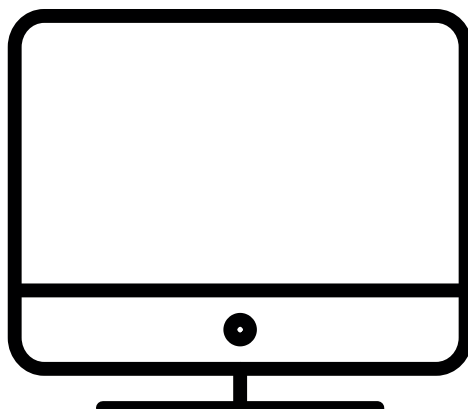
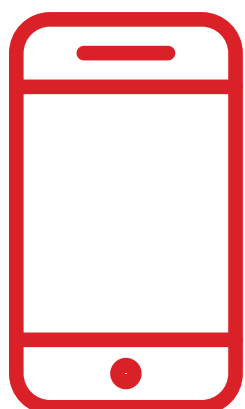
Every young person, or their parent / carer on their behalf, will have an opportunity to speak to a LA SENAR Officer who will work with them, to find the best way forward and to resolve any issues. The Officer's name and contact details will be in the letter sent to you with the final EHC Plan. This letter will also contain details of the right of appeal to the Special Educational Needs and Disability Tribunal (SENDIST).

15. Special Educational Needs and Disability Information, Advice & Support Service (SENDIASS)

SENDIASS is provided by the LA, primarily to provide comprehensive, quality and impartial advice to parents / carers of young people with SEND on all aspects of education. SENDIASS will be able to advise you on how decisions are made in relation to transfer to Post 16 placements and how concerns can be raised by young people or their parent / carer regarding a proposed or allocated placement.

If you require further information you can contact SENDIASS:

By telephone: 0121 303 5004
By Fax: 0121 464 3137
By email: SENDIASS@birmingham.gov.uk
By post: The POD, 28 Oliver St, Nechells, Birmingham B7 4NX



16. Travel Assist

The Transport Policy Statement, which the Education Act 1996 requires the LA to publish each year, sets out what travel support is available, from the Council and other bodies, to help young people aged 16-18 (and older in some cases) to attend their school or further education institution.

It is available on Birmingham City Council's website at: www.birmingham.gov.uk/travelassist. The Council itself does not generally provide any transport or travel assistance for post 16 education. However, it does make some provision for young people aged 16-18 who have an EHC Plan or have a disability or have learning difficulties. Such assistance is discretionary and is determined in accordance with the criteria set out in the policy statement.

However, financial assistance may be available from (or by applying through) the school or further education institution and Appendix 1 sets out full details of these schemes. In addition there are various concessionary travel schemes in Birmingham which may be available and these are set out in Appendix 2. There is also relevant government guidance which is available at:

www.gov.uk/subsidised-college-transport-16-19

Post 19

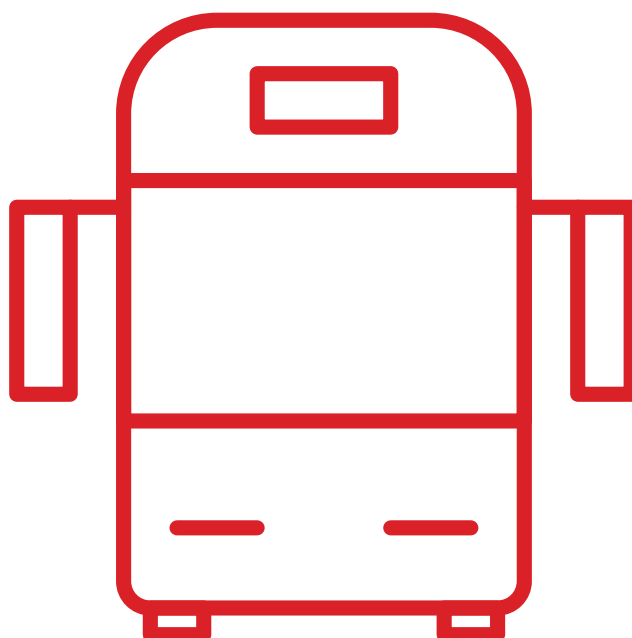
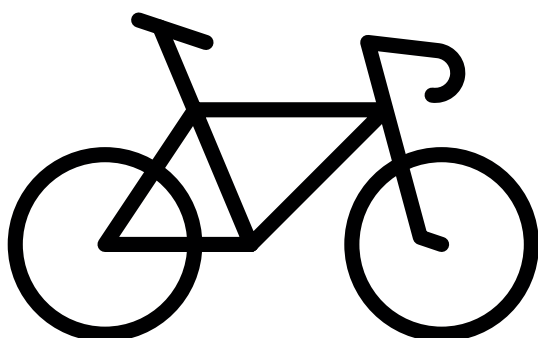
Birmingham City Council considers that, save for exceptional circumstances, it will not be appropriate to provide free transport or financial or other assistance to facilitate the attendance of adults receiving education. The Council is not obliged to provide free transport under section 508F of the Education Act 1996.

Further information

A full copy of the Transport Policy is available from Travel Assist at: <http://www.birmingham.gov.uk/travelassist> or from the address stated below. If your son / daughter is in any doubt about applying for assistance or would like further information, please contact:

Travel Assist
PO Box 1654
Birmingham
B2 2DD

Tel No: **0121 303 4955**
Email: **travelassist@birmingham.gov.uk**



17. Raising Participation Age

The government has raised the Participation Age and so those due to leave school in 2019 will need to remain in either education or training until the end of the academic year in which they turn 18. Raising the Participation Age is not the same as raising the school leaving age. Young people will be able to choose the best Post 16 option, and will be able to leave school after year 11 and consider the following options:

- **Full-time Education** – at a school Sixth Form, a General Further Education College (GFE) etc.
- **Supported Traineeship** – at a local training provider or a college. This will give young people a minimum of 6 months of work placement and they will be supported by a work mentor.
- **Traineeship** – at a local training provider or a college. This is for young people who want to develop practical skills through work experience lasting up to six months. It can lead to qualifications up to level 2.
- **Apprenticeship** – this is done through an employer and leads to work based qualifications up to level 3.
- **Employment with Training** – if employed, self-employed or volunteering full time (20 hours or more a week) but a young person must still be in learning for at least 280 hours a year, the equivalent of one day a week during term-time.

For more information on any of the above see:

- www.gov.uk/apply-apprenticeship
- www.ucasprogress.com
- www.nationalcareersservice.direct.gov.uk
- www.hotcourses.com



18. Careers Advice and Information/Support

Careers Guidance in School

Careers advice and guidance is available in schools for Key stage 4 students and schools can advise how to access this.

Careers Advice and Guidance can help to explain the different choices and options available, and suggest opportunities for young people to consider before they make an informed decision about their future Career Action Plan. It is vital that young people see a Careers Adviser and get a Career Action Plan that lists their choices, options and next steps for their future. At the back of this booklet there is Career Action Plan template that the school will complete.

Career Guidance after School

Students already in a post 16 placement like a college or a training provider will have access to a Careers Adviser to help them plan their future moves. The Careers Adviser will discuss with students what kind of options they have for example, vocational training, advanced qualifications, apprenticeships, looking for work, university and other forms of higher education. Students will need to book an appointment and should be able to explore all their future options.

The National Careers Service

The National Careers Service provides online support for young people and adults who need help with decision making and searching for courses & training. Young people can register for support if they are aged 13 or above. They will also be able to speak directly to an adviser by phone or online.

The National Careers Service website has online tools that can help with career exploration and decision making. For more information see:

- <https://nationalcareersservice.direct.gov.uk>
- **0800 100 900**



19. Not in Education, Employment or Training in Birmingham (NEET)

Birmingham Careers Service will work with young people if they have left school or a Post 16 placement and are Not in Education, Employment or Training (NEET). This means that if they are 16 & over, and unemployed then the Birmingham Career Service will be able to help them.

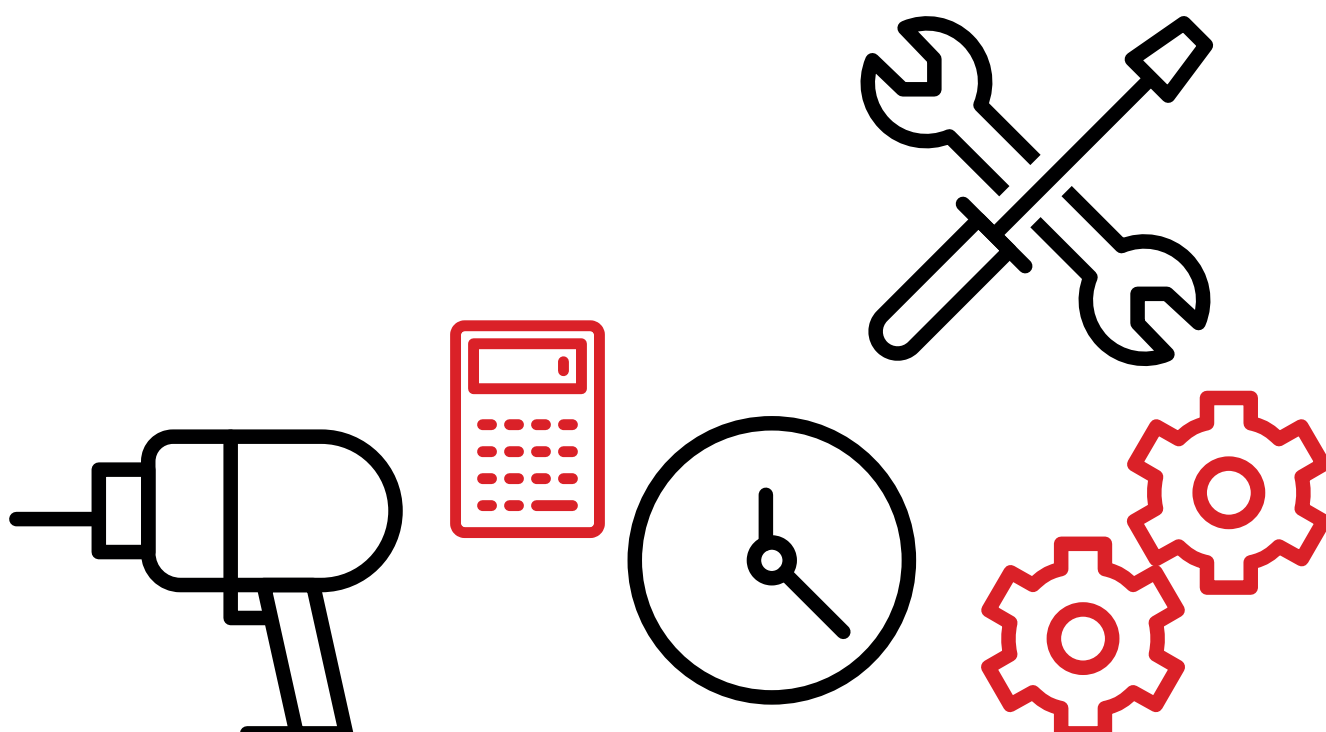
The Birmingham Careers Service will provide career information, advice and guidance to help young people consider their choices and options, and support them to look for jobs, training, and apprenticeships, or continue in education. A qualified Personal Adviser will work to support them.

For more information on the support the Birmingham Careers Service can offer:

- www.birminghamcareersservice.co.uk

Or alternatively phone the following number to book an appointment to see a Personal Adviser at a community or youth venue near to home:

- **0121 675 6105**



20. How do qualifications compare?

The chart below shows some examples of how different qualifications compare to each other. Depending on what subjects and levels you've studied, students may be able to move between different types of qualification. For example: moving from a general education course at Level 2, on to a Diploma at Level 3.

	Entry Level 1, 2 & 3	Level 1	Level 2	Level 3	Level 4-8
General education courses	Foundation level Study Programme	GCSE grade 1-3 (old D-G) Functional Skills	GCSE grade 4-9 (old A*-C) Functional Skills	A Level, AS Level, A2 Level International Baccalaureate	Degree Masters Degree PhD
Vocational education courses – including BTEC and City & Guilds*	Foundation level Study Programme	Awards, Certificates and Diplomas at Level 1	Awards, Certificates and Diplomas at Level 2	Awards, Certificates and Diplomas at Level 3	HNC, HND Professional Diploma Foundation Degree
Traineeships/	Pre-Apprenticeship programme/ Traineeships or internships	Pre-Apprenticeship programme/ Traineeships	Apprenticeship NVQ Level 2 plus technical certificates such as BTEC Level 2	Advanced Level Apprenticeship – NVQ Level 3 plus technical certificates such as BTEC Level 3	Higher Apprenticeship – NVQ 4, Foundation Degree, HNC or HND
Supported Internships/ Foundation programmes	Awards, Certificates or Diplomas at Entry Level 1, 2 or 3 Skills for Life Functional Skills	Awards, Certificates or Diplomas at Level 1 Essential Skills Functional Skills	This Study Programme is to help people who haven't yet reached Level 2, and to prepare your son/daughter to progress on to a Level 2 course, a job with training or an Apprenticeship		

21. contacts

Birmingham

Special Educational Needs Assessment & Review (SENAR)

SENAR (LC)
PO Box 16289
Birmingham
B2 2XN

Email: SENAR.Transfers
@birmingham.gov.uk
Tel: 0121 303 1888

Please ask to speak to the SENAR department,
quoting your son / daughter's current school.

Coventry

www.coventry.gov.uk/sendlocaloffer

Coventry City Council
Statutory Assessment Review Service
PO Box 15
Council House
Earl Street
Coventry
CV1 5RR

Tel: 02476 831 614
Email: SEN@coventry.gcsx.gov.uk

Dudley

[http://www.dudley.gov.uk/
special-education- needs](http://www.dudley.gov.uk/special-education-needs)

SEN Team, Dudley MBC
Ladies Walk Centre Ladies Walk,
Sedgley
West Midlands
DY3 3UA

Tel: 01384 814360
Email: senteam@dudley.gov.uk

Sandwell

www.sandwell.gov.uk/send

SEN Team
Connor Education Centre
Connor Road West Bromwich
B71 3DJ

Tel: 0121 569 8240
Email: sen_team@sandwell.gov.uk

Solihull

www.socialsolihull.org.uk/localoffer

Statutory Assessment & Review Team
Children's and Young People
SEND 0-25 Service
Learning Skills and Progression
Children's and Families

Solihull Metropolitan Borough Council
Elmwood Place
37 Burtons Way Smithswood Solihull
West Midlands
B36 0UG

Tel: 0121 704 6690
Email: edsen@solihull.gov.uk



Staffordshire

www.staffordshire.gov.uk

Special Educational Needs,
1 Staffordshire Place, Tipping Street
Stafford
ST16 2DH

Tel: 0300 111 8007 option 3

Email: Sendreferrals@staffordshire.gov.uk

Walsall

www.walsall.gov.uk

SEN Team,
Education Development Centre,
Pelsall Lane, Rushall,
Walsall
WS4 1NG

Tel: 01922 652871

Email: sen@walsall.gov.uk

Warwickshire

www.warwickshire.gov.uk/send

Warwickshire SENDAR Team,
Building 1
Saltisford Office
Park Ansell Way
Warwick
CV34 4UL

Tel: 01926 742160

Wolverhampton

www.wolverhampton.gov.uk/send

SENSTART
Wolverhampton City Council
1st Floor, Civic Centre
St Peter's Square
Wolverhampton
WV1 1RT

Tel: 01902 555691

Email: Senstart@wolverhampton.gov.uk

Worcestershire

www.worcestershirelocaloffer.org.uk

SEND – Education and Skills, Children Families
and Communities, County Hall,
Spetchley Road, Worcester WR5 2NP

Tel: 01905 845579

Email: sen@worcestershire.gov.uk

Other useful contacts:

**Archdiocese of
Birmingham (RC)**
www.bdes.org.uk

The Archdiocese of Birmingham
Education Service, Don Bosco House,
Coventry Road, Coleshill B46 3EA

Tel: 01675 464755

Advisory Centre for Education

ACE Education Advice & Ace Education Training.
Ace also runs training for
professionals contact them at:
Training@ace-ed.org.uk or
Tel: 0208 888 3377.

Ace runs an advice line for parents
Monday to Wednesday
10.00 am-1.00 pm
Tel: 03000 115142.
You can get more details from
Ace Website:
www.ace-ed.org.uk

Department for Education

Ministerial and Public
Communications Division
Department for Education
Piccadilly Gate Store Street
Manchester
M1 2WD

Tel: 0370 000 2288 or contact
www.education.gov.uk/contact us

Diocese of Birmingham (CE)

www.cofebirmingham.com

Diocese of Birmingham (CE),
The Church of England,
1 Colmore Row,
Birmingham B3 2BJ

Tel: 0121 426 0400
www.cofebirmingham.com

Travel Assist

http://www.birmingham.gov.uk/travelassist

Education Transport Service
PO Box 16541
Birmingham
B2 2DD

Tel: 0121 303 4955
Email: travelassist@birmingham.gov.uk



22. Details of Mainstream Secondary Schools with Sixth Form Centres

Sixth Form Centres will give your son / daughter a number of choices from A Levels, repeating GCSEs, Functional Skills and BTEC vocational qualifications. If your son / daughter has an EHC Plan then they will also continue to be supported with their needs as stated in their EHC Plan.

Applications must be made directly to the schools. Your son / daughter must also complete the Preference Form and send it to SENAR. It is a good idea to visit the Sixth Forms of your son/ daughter's preferences on their Open Days to find out more about the qualifications on offer, travelling, environment, tutors and the support they can get.

ARCHBISHOP ILSLEY CATHOLIC SCHOOL

Victoria Road, Acocks Green, B27 7XY

Tel: (0121) 706 4200

Head teacher: Mr G. Alexander

Web: www.ilsley.bham.sch.uk

Chair of Governors: Mrs M. Mills

Email: enquiry@ilsley.bham.sch.uk

Total number of students in the sixth form: 160

ARK ST ALBAN'S ACADEMY

Conybere Street, Highgate, B12 0YH

Tel: (0121) 446 1300

Executive Principal: Mr Mark Gregory

Web: arkstalbans.org

Chair of Governors: Jo Dawson

Email: info@arkstalbans.org

Total number of students in the sixth form: TBA

THE ARTHUR TERRY SCHOOL (ACADEMY)

Kittoe Road, Sutton Coldfield B74 4RZ

Tel: (0121) 323 2221

Head teacher: Mr Neil Warner

Web: www.arthurterry.bham.sch.uk

Chair of Governors: Mr Andrew Wood

Email: enquiry@arthurterry.bham.sch.uk

Total number of students in the sixth form: 439

ASTON MANOR ACADEMY

Phillips Street, Aston, B6 4PZ

Tel: (0121) 359 8108

Head teacher: Mrs Jill Sweeney

Web: www.astonmanoracademy.com

Chair of Governors: Alex Lofthouse

Email: enquiry@astonmanoracademy.com

Total number of students in the sixth form: TBA

BISHOP CHALLONER CATHOLIC COLLEGE

Institute Road, Kings Heath, B14 7EG

Tel: (0121) 444 4161

Head teacher: Mr Kevin McEvoy

Web: www.bishopchalloner.org.uk

Chair of Governors: Mr Gregory Keegan

Email: enquiry@bishopchalloner.bham.sch.uk

Total number of students in the sixth form: 256

BISHOP VESEY'S GRAMMAR SCHOOL (ACADEMY)

Lichfield Road, Sutton Coldfield, B74 2NH

Tel: (0121) 250 5400

Head teacher: Mr Dominic Robson

Web: www.bvgs.co.uk

Chair of Governors: Dr John Craggs

Email: enquiry@bishopveseys.bham.sch.uk

**Please note – this is a boys school
with a mixed gender 6th form**

Total number of students in the sixth form: 382

BISHOP WALSH CATHOLIC SCHOOL (ACADEMY)

Wylde Green Road, Sutton Coldfield, B76 1QT

Tel: (0121) 351 3215

Head teacher: Mr John Farrell

Web: www.bishopwalsh.net

Chair of Governors: Father Neil Bayliss

Email: enquiry@bishopwalsh.net

Total number of students in the sixth form: 265

BORDESLEY GREEN GIRLS' SCHOOL & SIXTH FORM

Bordesley Green Road, Bordesley Green, B9 4TR

Tel: (0121) 464 1881

Head teacher: Ms Judith Woodfield

Web: www.bordgrng.bham.sch.uk

Chair of Governors: Mr Ian Hedley

Email: enquiry@bordgrng.bham.sch.uk

Total number of students in the sixth form: TBA

BROADWAY SCHOOL (ACADEMY)

The Broadway, Perry Barr, B20 3DP

Tel: (0121) 566 4334

Head teacher: Mr R.J. Skelton

Web: www.broadway-academy.co.uk

Chair of Governors: Joe Cahill

Email: enquiry@broadway-academy.co.uk

Total number of students in the sixth form: 148

COLMERS SCHOOL AND SIXTH FORM

Bristol Road South, Longbridge, B45 9NY

Tel: (0121) 453 1778

Head teacher: Mr Barry Doherty

Web: www.colmers.bham.sch.uk

Chair of Governors: Mr Andy McHale

Email: enquiries@colmers.bham.sch.uk

Total number of students in the sixth form: TBC

DAME ELIZABETH CADBURY TECHNOLOGY COLLEGE

Woodbrooke Road, Bournville, B30 1UL

Tel: (0121) 464 4040

Head teacher: Mr Mike Dunn

Web: www.decschool.co.uk

Chair of Governors: Mr Jeremy Bench

Email: enquiry@decschool.co.uk

Total number of students in the sixth form: 31

FAIRFAX SCHOOL (ACADEMY)

Fairfax Road, Sutton Coldfield, B75 7JT

Tel: (0121) 378 1288

Head teacher: Ms Debbie Bunn

Web: www.fairfax.bham.sch.uk

Chair of Governors: Mr Neil Philpott

Email: post@fairfax.bham.sch.uk

Total number of students in the sixth form: 224

GEORGE DIXON ACADEMY

Portland Road, Edgbaston, B16 9GD

Tel: (0121) 566 6565

Academy Principal: Mr Anthony Hamilton

Web: www.georgedixonacademy.com

Chair of Governors: Mr Henry Coore

Email: contact@georgedixonacademy.com

Total number of students in the sixth form: 1

GREAT BARR SCHOOL

Aldridge Road, Great Barr, B44 8NU

Tel: (0121) 366 6611

Head teacher: Ms Ingrid Abrahams

Web: www.greatbarracademy.org.uk

Chair of Academy Council: Mr Peter Hull

Email: secretariat@greatbarracademy.org.uk

Total number of students in the sixth form: 220

GREENWOOD ACADEMY

Farnborough Road, Castle Vale, B35 7NL

Tel: (0121) 464 6101

Head teacher: Mr Allen Bird

W: sites.google.com/a/aetinet.org/greenwood-academy

Chair of Governors: Beverley Perrin

Email: contactus@greenwoodacademy.org

Total number of students in the sixth form: TBA

HAMSTEAD HALL ACADEMY

Craythorne Avenue, Handsworth Wood, B20 1HL

Tel: (0121) 386 7510

Head teacher: Mr J Mortimer and Mr Farar

Web: www.hamsteadhall.com

Chair of Governors: Rachel Burroughs

Email: postbox@hamsteadhall.com

Total number of students in the sixth form: 220

HANDSWORTH WOOD GIRLS' ACADEMY

Church Lane, Handsworth, B20 2HL

Tel: (0121) 554 8122

Academy Principal: Ms Nicola Walters

Web: www.hwga.org.uk

Chair of Governors: Mr Amjid Mahroof

Email: enquiry@hwga.org.uk

Total number of students in the sixth form: 200

HARBORNE ACADEMY

Harborne Road, Edgbaston, B15 3JL

Tel: (0121) 464 2737

Head teacher: Mrs Jessie Elbaz

Web: www.harborneacademy.co.uk

Chair of Governors: Mr Roger Minett

Email: enquiry@harborneacademy.co.uk

Total number of students in the sixth form: 200

HEARTLANDS ACADEMY

Gt Francis Street, Nechells, B7 4QR

Tel: (0121) 464 3931

Head teacher: Mr Fuzel Choudhury

Web: www.heartlandsacademy.e-act.org.uk

Chair of Governors: Mrs Maggie Tate

Email: heartlands.enquiry@e-act.org.uk

Total number of students in the sixth form: 80

HILLCREST SCHOOL & SIXTH FORM CENTRE

Stonehouse Lane, Bartley Green, B32 3AE

Tel: (0121) 464 3172

Head teacher: Ms Julie Davis

Web: hillcrest.bham.sch.uk

Chair of Governors: Ms Dee McIlMurray

Email: enquiry@hillcrest.bham.sch.uk

**Please note – this is a girls school
with a mixed gender 6th form**

Total number of students in the sixth form: 48

HOLTE SCHOOL

Wheeler Street, Lozells, B19 2EP

Tel: (0121) 566 4370

Head teacher: Jas Sohal

Web: www.holte.bham.sch.uk

Chair of Governors: Mrs C Hardy

Email: enquiry@holte.bham.sch.uk

Total number of students in the sixth form: 215

HOLYHEAD SCHOOL

Milestone Lane, Soho, B21 0HN

Tel: (0121) 523 1960

Head teacher: Mr Ross Trafford

Web: www.holyheadschoo.org.uk

Chair of Governors: Mr Mike Jameson

Email: enquiry@holyheadschoo.org.uk

Total number of students in the sixth form: TBC

JOHN WILLMOTT SCHOOL

Reddicap Heath Rd, Sutton Coldfield, B75 7DY

Tel: (0121) 378 1946

Head teacher: Tracey Peters

Web: www.jws.bham.sch.uk

Chair of Governors: Mr Tim Claxton

Email: enquiry@jws.bham.sch.uk

Total number of students in the sixth form: 102

KING EDWARD VI ASTON SCHOOL (ACADEMY)

Frederick Road, Aston, B6 6DJ

Tel: (0121) 327 1130

Head teacher: Mr Colin Parker

Web: www.keaston.bham.sch.uk

Chair of Governors: Dr Alistair Rae

Email: enquiry@keaston.bham.sch.uk

Total number of students in the sixth form: 240.

Please note – this provision is boys only.

KING EDWARD VI CAMP HILL SCHOOL FOR BOYS

Vicarage Road, Kings Heath, B14 7QJ

Tel: (0121) 444 3188

Head teacher: Mr M.Garrod

Web: www.camphillboys.bham.sch.uk

Chair of Governors: Mr B Matthews

Email: enquiry@camphillboys.bham.sch.uk

Total number of students in the sixth form: 280

KING EDWARD VI CAMP HILL SCHOOL FOR GIRLS (ACADEMY)

Vicarage Road, Kings Heath, B14 7QJ

Tel: (0121) 444 2150

Head teacher: Mrs Linda Johnson

Web: www.kechg.org.uk

Chair of Governors: Ms E. Conway

Email: head@kechg.org.uk

Total number of students in the sixth form: 335

KING EDWARD VI FIVE WAYS SCHOOL (ACADEMY)

Scotland Lane, Bartley Green, B32 4BT

Tel: (0121) 475 3535

Academy Principal: Mrs Y. L. Wilkinson

Web: www.kefw.org

Chair of Governors: Prof. Hywel Thomas

Email: office@kefw.org

Total number of students in the sixth form: 355

KING EDWARD VI HANDSWORTH BOYS SCHOOL

Grove Lane, Handsworth, B21 9ET

Tel: (0121) 554 2794

Head teacher: Dr S N Bird

Web: www.handsworth.bham.sch.uk

Chair of Governors: Father Stephens

Email: enquiry@handsworth.bham.sch.uk

**Please note – this is a boys school
with a mixed gender 6th form**

Total number of students in the sixth form: 243

KING EDWARD VI HANDSWORTH SCHOOL FOR GIRLS (ACADEMY)

Rose Hill Road, Handsworth, B21 9AR

Tel: (0121) 554 2342

Head teacher: Mrs Amy Whittall

Web: www.kingedwardvi.bham.sch.uk

Chair of Governors: Mr David Wheeldon

Email: office@kingedwardvi.bham.sch.uk

Total number of students in the sixth form: 221

KING EDWARD VI SHELDON HEATH ACADEMY

Sheldon Heath Road, Sheldon, B26 2RZ

Tel: (0121) 464 4428

Academy Principal: Mr John Allen

Web: www.keshacademy.com

Chair of Governors: Mr Peter Christopher

Email: enquiries@keshacademy.com

Total number of students in the sixth form: 180

KINGS NORTON GIRLS' SCHOOL AND SIXTH FORM COLLEGE (ACADEMY)

Selly Oak Road, Kings Norton, B30 1HW

Tel: (0121) 675 1305

Head teacher: Ms Gill Fox

Web: www.kngs.co.uk

Chair of Governors: Mr D Green

Email: enquiry@kngs.co.uk

Total number of students in the sixth form: 150

LORDSWOOD GIRLS' AND SIXTH FORM CENTRE (ACADEMY)

Knightlow Road, Harborne, B17 8QB

Tel: (0121) 429 2838

Head teacher: Mrs Jane Gotschel

Web: www.lordswoodgirls.co.uk

Chair of Trust: Mr Paul Brownsword

Email: lgs-enquiry@lordswoodtrust.co.uk

Please note – this is a girls school with a mixed gender 6th form

Total number of students in the sixth form: 276

MOSELEY SCHOOL

Wake Green Road, Moseley, B13 9UU

Tel: (0121) 566 6444

Head teacher: Mr Roger McBrien

Web: www.moseley.bham.sch.uk

Chair of Governors: Mrs Pat Beanland

Email: enquiry@moseley.bham.sch.uk

Total number of students in the sixth form: 168

NISHKAM HIGH SCHOOL

Great King Street North, Hockley, B19 2LF

Tel: (0121) 348 7660

Head teacher: Mr Damien Kearns

Web: www.nishkamschooltrust.org

Chair of Governors: Mr Amrik Singh Bhabra

Email: enquiries.NHSB@nishkamschool.org

Total number of students in the sixth form: TBA.

NORTH BIRMINGHAM ACADEMY

395 College Road, Erdington, B44 0HF

Tel: (0121) 373 1647

Head teacher: Mr Phillip Lloyd

Web: www.northbirminghamacademy.e-act.org.uk

Email: NBA.enquiries@e-act.org.uk

Total number of students in the sixth form: 128

PLANTSBROOK SCHOOL (ACADEMY)

Upper Holland Road, Sutton Coldfield, B72 1RB

Tel: (0121) 362 7310

Head teacher: Ms T. Campbell

Web: web.plantsbrookschool.co.uk

Chair of Governors: Mr D Griffiths

Email: enquiry@plantsbrookschool.co.uk

Total number of students in the sixth form: 201

SHENLEY ACADEMY

Shenley Lane, Selly Oak, B29 4HE

Tel: (0121) 464 5191

Head teacher: Mrs Lucy Monk

Web: www.shenleyacademy.org.uk

Chair of Governors: Mr D. Banton

Email: enquiry@shenleyacademy.org.uk

Total number of students in the sixth form: 164

SMALL HEATH LEADERSHIP ACADEMY

Muntz Street, Small Heath, B10 9RX

Tel: (0121) 464 7997

Principal: Mrs Al-Ani

Web: www.smallheathleadershipacademy.com

Chair of Governors: Lisa Clausby

Email: info@smallheath.tetrust.org

Total number of students in the sixth form: 230

ST EDMUND CAMPION CATHOLIC SCHOOL

Sutton Road, Erdington, B23 5XA

Tel: (0121) 464 7700

Head teacher: Mrs Philomena Steele

Web: www.stedcamp.bham.sch.uk

Chair of Governors: Mike Daly

Email: enquiry@stedcamp.bham.sch.uk

Total number of students in the sixth form: 125

ST PAUL'S SCHOOL FOR GIRLS

Vernon Road, Edgbaston, B16 9SL

Tel: (0121) 454 0895

Head teacher: Dr Dawn E Casserly

Web: www.stpaulgl.bham.sch.uk

Chair of Governors: Mrs Mary Browning

Email: enquiry@stpaulgl.bham.sch.uk

Total number of students in the sixth form: 16

ST THOMAS AQUINAS CATHOLIC SCHOOL

Wychall Lane, Kings Norton, B38 8AP

Tel: (0121) 464 4643

Principal: Miss Clare Madden

Web: www.stacs.org

Head of School: Mr Martin

Email: enquiry@stacs.bham.sch.uk

Chair of Governors: Mrs Annette Duffy

Total number of students in the sixth form: 210

SUTTON COLDFIELD GRAMMAR SCHOOL FOR GIRLS (ACADEMY)

Jockey Road, Sutton Coldfield, B73 5PT

Tel: (0121) 354 1479

Head teacher: Dr Barbara Minards

Web: www.suttcold.bham.sch.uk

Chair of Governors: Mrs Nicky Lloyd

Email: enquiry@suttcold.bham.sch.uk

Total number of students in the sixth form: 260

SWANSHURST SCHOOL

Brook Lane, Billesley, B13 0TW

Tel: (0121) 464 2400

Head teacher: Ms Deborah James

Web: www.swanshurst.org

Chair of Governors: Prof. Philip Thickett

Email: enquiry@swans.bham.sch.uk

Please note – this provision is girls only.

Total number of students in the sixth form: 240.

UNIVERSITY OF BIRMINGHAM SCHOOL & SIXTH FORM (FREE SCHOOL)

Weoley Park Road, Selly Oak, B29 6QU

Tel: (0121) 796 5000

Head teacher: Mr Michael Roden

Web: www.uobschool.org.uk

Chair of Governors: Chris Banks

Email: reception@uobschool.org.uk

Total number of students in the sixth form: 200

WASHWOOD HEATH ACADEMY

Burney Lane, Stechford, B8 2AS

Tel: (0121) 675 7272

Head teacher: Mrs Heather McLachlan

Web: www.washwoodheath.com

Chair of Governors: Mr C Knight

Email: enquiry@washwoodconnect.com

Total number of students in the sixth form: 100

WAVERLEY SCHOOL

311 Yardley Green Road, Bordesley Green East, B9 5QA

Tel: (0121) 566 6600

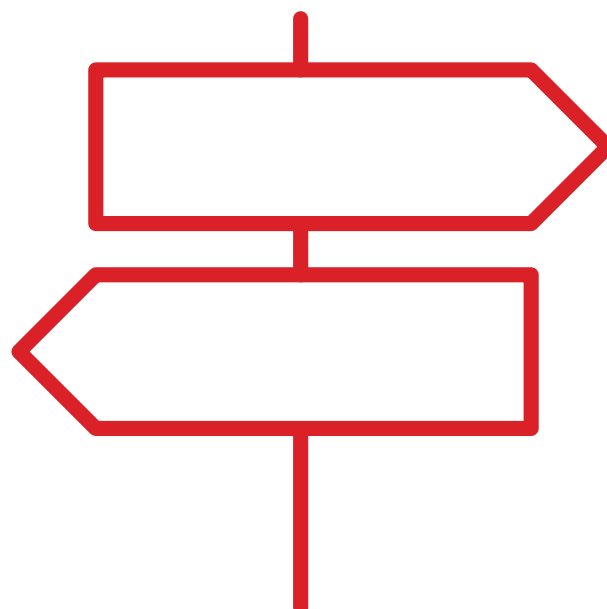
CEO: Kamal Hanif OBE

Web: www.waverley.bham.sch.uk

Chair of Governors: Mr Zaheer Abbas

Email: enquiry@waverley.bham.sch.uk

Total number of students in the sixth form: 90



23. Post 16 Specialist Vocational Colleges

There are three age 14 to 19 vocational colleges in Birmingham which provide a vocational based education in a specific field.

These colleges have their own admissions process, which can be different to other placements and can include practical assessments and auditions as well as requiring the required grades.

ASTON UNIVERSITY ENGINEERING ACADEMY

1 Lister St, Birmingham, B7 4AG

Tel: (0121) 380 0570

Principal: Daniel Locke -Wheaton

Web: www.auea.co.uk

Chair of Governors: Mr Neil Scott

Email: enquiries@auea.co.uk

Aston University Engineering Academy is a 14-19 mixed University Technical College with specialisms in Engineering and Science.

BIRMINGHAM ORMISTON ACADEMY

1 Grosvenor Street, Birmingham

Tel: (0121) 359 9300

Head teacher: Gaynor Cheshire

Web: www.boa-academy.co.uk

Chair of Governors: Mr Mike Gibbons

Email: info@boa-academy.co.uk

Birmingham Ormiston Academy specialises in the creative, digital and performing arts and offers post 16 students the opportunity to specialise in the subjects they love and in which they show real talent. Their learning pathways include BTEC and traditional AS/A2 courses.

WAVERLEY STUDIO COLLEGE

470 Belchers Lane, Birmingham B9 5SX

Tel: (0121) 566 6622

Head teacher: Mr Ijaz Muhammad

Web: waverleystudiocollege.co.uk

Chair of Governors: Mr Harris Khaliq

Email: enquiry@waverleystudiocollege.co.uk

Waverley Studio College is a 14-19 Academy that prepares students for careers in Health & Social Care, Enterprise and Creative Technology. They welcome applications from all students who are keen to explore different learning opportunities and who enjoy working in applied, vocational settings.

24. Details of special Sixth Form Centres

There are special schools with Sixth Form Centres which prepare students for independent living and cater for students with the following needs:

1. Cognition and Learning (C&L)
2. Moderate Learning Difficulties (MLD)
3. Autistic Spectrum Conditions (ASC)
4. Hearing Impairments (HI)
5. Visual Impairments (VI)

These specialist schools usually offer entry level qualifications and have a rich assortment of extra-curricular activities. Only those students with the most complex needs should attend a Special Sixth Form. Students will be considered for a Special Sixth Form that can best meet their needs and is as close to home as possible.

Description of the types of need catered for and details of the individual schools:

1. Cognition and Learning (C&L)

C&L special schools cater for students with an EHC Plan, who have persistent and complex learning needs that require specialist teaching input. They may have additional needs, such as physical disabilities, sensory impairments, speech, language, and communication needs (which include autism) and/or complex health needs.

C&L Sixth Forms provide specialist teaching in small groups from staff with experience, skills and qualifications in working with students with SEN with the above difficulties.

C & L Schools

CALTHORPE TEACHING ACADEMY

Darwin St, Highgate, B12 OTT

Tel: (0121) 773 4637

Principal: Mr Richard Chapman

Web: www.calthorpe.bham.sch.uk

Chair of Governors: Mr Stewart Sherman

Email: enquiry@calthorpe.bham.sch.uk

FOX HOLLIES SCHOOL AND PERFORMING ARTS COLLEGE

Highbury Campus, Queensbridge Rd, Moseley, B13 8QB

Tel: (0121) 464 6566

Head teacher: Mr Keith Youngson

Web: www.foxhollies.bham.sch.uk

Chair of Governors: Mrs Jane Maguire

Email: enquiry@foxhollies.bham.sch.uk

MAYFIELD SCHOOL

Wheeler Street, Lozells, B19 2EP

Tel: (0121) 566 4370

Head teacher: Ms Sue Bainbridge

Web: www.mayfield.bham.sch.uk

Chair of Governors: Vicky Wynne

Email: enquiry@mayfield.bham.sch.uk

VICTORIA SCHOOL

Bell Hill, Northfield, B31 1LD

Tel: (0121) 476 9478

Executive Head teacher: Julie Fardell

Web: www.victoria.bham.sch.uk

Chair of Governors: Christine Dalby- Ali

Email: enquiry@victoria.bham.sch.uk

WILSON STUART SCHOOL (ACADEMY)

Perry Common Rd, Erdington, B23 7AT

Tel: (0121) 373 4475

Head teacher: Mr Steve Hughes

Web: www.wilsonstuart.co.uk

Chair of Governors: Mr Mike Jameson

Email: enquiry@wilsonstuart.co.uk

2. Moderate Learning Difficulties (MLD)

MLD Sixth Forms cater for students with learning difficulties and associated needs including autistic spectrum conditions (ASCs), sensory impairment and speech and language disorders. Pupils with MLD may also have an additional diagnosis e.g. physical, visual or hearing impairment, ADD/ADHD etc. which would lead to a greater complexity of needs.

MLD Sixth Forms

HALLMOOR SCHOOL

50 Scholars Gate, Kitts Green, B33 0DL

Tel: (0121) 783 3972

Head teacher: Mrs Joanne Edwards

Web: www.hallmoor.bham.sch.uk

Chair of Directors: Anthony Greenwood

Email: enquiry@hallmoor.bham.sch.uk

QUEENSBURY SCHOOL

Wood End Road, Erdington, B24 8BL

Tel: (0121) 373 5731

Head teacher: Mrs Veronica Jenkins

Web: www.queensburysch.com

Chair of Governors: Mr David Bishop

Email: enquiry@queensbury.bham.sch.uk

SELY OAK TRUST SCHOOL

Oak Tree Lane, Selly Oak, B29 6HZ

Tel: (0121) 472 0876

Head teacher: Mr Chris Field

Web: www.sellyoak.bham.sch.uk

Chair of Governors: Mrs Linda Lockwood

Email: enquiry@sellyoak.bham.sch.uk

3. Autistic Spectrum Conditions (ASC)

ASC Special Sixth Forms cater for students on the Autistic Spectrum with an EHC Plan who display the most complex needs. They provide specialist teaching in small groups from staff with experience, skills and qualifications in working with students with ASC. Students admitted to this type of provision display complex behaviours that include difficulties with communication, social interaction and rigidity of thought.

ASC Schools

BASKERVILLE SCHOOL

Fellows Lane, Harborne, B17 9TS

Tel: (0121) 427 3191

Head teacher: Ms Rosemary Adams

Web: www.baskvill.bham.sch.uk

Chair of Governors: Mr Ian Binnie

Email: enquiry@baskvill.bham.sch.uk

OScott MANOR SCHOOL

Old Oscott Hill, Kingstanding, B44 9SP

Tel: (0121) 360 8222

Head teacher: Ms Victoria Miller

Web: www.oscottmanor.bham.sch.uk

Chair of Governors: Hillary Jefferies

Email: enquiry@oscottmanor.bham.sch.uk

UFFCULME SCHOOL

Queensbridge Road, Moseley, B13 8QB

Tel: (0121) 464 5250

Acting Head teacher: Mr Matthew Scarrott

Web: www.uffculme.bham.sch.uk

Chair of Governors: Mrs Clive Rockingham

Email: enquiry@uffculme.bham.sch.uk

4. Hearing Impairment (HI)

This type of provision caters for students with an EHC Plan whose significant primary need is deafness/hearing impairment, some of whom may have associated additional complex needs. They provide specialist teaching in small groups from staff with experience, skills and qualifications in working with students with hearing impairments.

Students admitted to this type of provision require a higher level of small group teaching due to difficulty accessing the National Curriculum. Social, emotional and cultural aspects of their learning may also require enhanced levels of support. Their preferred method of communication would necessitate access to the planned teaching of BSL and English.

HI School

BRAIDWOOD TRUST SCHOOL FOR THE DEAF

Bromford Road, Hodge Hill, B36 8AF

Tel: (0121) 464 5558

Head teacher: Mrs Karen Saywood

Web: www.braidwood.bham.sch.uk

Chair of Governors: Mrs June Newnham

Email: enquiry@braidwood.bham.sch.uk

5. Visual Impairment (VI)

This type of provision caters for students with an EHC Plan whose significant primary need is visual impairment and who may also have other associated additional complex needs but require a VI specific environment. They provide specialist teaching in small groups from staff with experience, skills and qualifications in working with students with visual impairment.

Pupils admitted to this type of provision have difficulty in accessing the National Curriculum and will require a slower pace of work in a quiet, distraction free environment.

Placement of pupils in this type of provision will also depend on the nature and extent of their special needs in addition to the level of visual impairment.

VI School

PRIESTLEY SMITH SCHOOL

Perry Beeches Campus, Great Barr, B42 2PY

Tel: (0121) 325 3900

Head teacher: Miss Helen Porter

Web: www.priestleysmith.co.uk

Chair of Governors: Mrs Denise McManus

Email: enquiry@priestley.bham.sch.uk

25. Resource Bases

The resource bases provide specialist support but also allow links to mainstream classrooms. There will be three types of 'resource base' available at Post 16 transfer in September 2019, catering for one of the following primary needs:

Autistic Spectrum Conditions (ASC)
Hearing Impairments (HI)
Visual Impairments (VI)

Autistic Spectrum Conditions (ASC)

This ASC resource base is located in a mainstream school and provides specialist teaching, sometimes in small groups, for students with ASC. Due to the location, opportunities exist for students to link with activities and learning opportunities within mainstream classrooms.

Students entering this type of provision are those identified as having ASC and require a structured environment in which specific strategies are used to promote their engagement with learning. It is unlikely that a student's ASC status alone will enable them to obtain a place within specialist provision but rather the presentation of their overall needs.

Associated issues may include sensory impairments and/or difficulties with learning and/or behavioural challenges.

ASC Resource Base

GREENWOOD ACADEMY

Farnborough Road, Castle Vale, B35 7NL

Tel: (0121) 464 5250

Head teacher: Mr Allen Bird

Web: <https://sites.google.com/a/aetinet.org/greenwood-academy>

Chair of Governors: Beverley Perin

Email: contactus@greenwoodacademy.org

Hearing Impairment (HI)

HI resource bases are located in mainstream schools and provide specialist teaching, sometimes in small groups, for students with hearing Impairments. Due to their location, opportunities exist for students to link with activities and learning opportunities within mainstream classrooms.

Students entering this provision have a primary need of moderate to severe hearing loss. They will have hearing aids, but spoken and written language difficulties and their educational performance will be significantly affected by hearing loss, requiring direct specialist teaching intervention and staff.

It is unlikely that a student's hearing status alone will necessitate a place within specialist provision but rather the presentation of their overall needs.

HI Resource Bases

BORDESLEY GREEN GIRLS' SCHOOL & SIXTH FORM

Bordesley Green Road, Bordesley Green, B9 4TR

Tel: (0121) 464 1881

Head teacher: Ms Judith Woodfield

Web: www.bordgrng.bham.sch.uk

Chair of Governors: Mr Ian Hedley

Email: enquiry@bordgrng.bham.sch.uk

SMALL HEATH LEADERSHIP ACADEMY

Muntz Street, Small Heath, B10 9RX

Tel: (0121) 464 7997

Principal: Mrs Al-Ani

Web: www.smallheathleadershipacademy.com

Chair of Governors: Lisa Clausby

Email: info@smallheath.tetrust.org

Visual Impairment (VI)

This VI resource base is located in a mainstream school and provides specialist teaching, sometimes in small groups, for students with VI. Due to the location, opportunities exist for students to link with activities and learning opportunities within mainstream classrooms.

Students entering this provision have a primary need of VI and typically they will require a modified curriculum with additional attention to visually presented information. They will also need advice on everyday aspects of interaction and mobility as well as frequent access to specialist input.

They may also have additional learning or emotional needs which will increase the impact of their visual impairment. It is unlikely that a student's visual status alone will necessitate a place within specialist provision but rather the presentation of their overall needs.

VI Resource Bases

PLANTSBROOK SCHOOL (ACADEMY)

Upper Holland Road, Sutton Coldfield, B72 1RB

Tel: (0121) 362 7310

Head teacher: Ms T. Campbell

Web: web.plantsbrookschool.co.uk

Chair of Governors: Mr D Griffiths

Email: enquiry@plantsbrookschool.co.uk

26. Independent Specialist Providers (ISP) in Birmingham

Independent Specialist Providers (ISP) offer college courses and work based training in many different subjects and many also offer functional skills. Students will need to phone them to get more information and an application form.

Applications must be made directly to the ISP and the preference form with this booklet must also be completed and sent to SENAR.

QUEEN ALEXANDRA COLLEGE

Court Oak Road, Harborne, B17 9TG

Tel: (0121) 428 5050

Head teacher: Mr Hugh Williams

Web: www.qac.ac.uk

Chair of Governors: Chris Bradshaw

Email: info@qac.ac.uk

TRINITY SPECIALIST COLLEGE

The Lindridge, Lindridge Road, B75 7JB

Tel: (0121) 378 3242

Operations Director: Mrs Sally Evans MBE

Web: www.trinityspecialistcollege.co.uk

Email: trinityspecialistcollege@gmail.com

27. Specialist Post 19 Providers

HEART OF BIRMINGHAM VOCATIONAL COLLEGE

19a Cato Street, Nechells, B7 4TS

Tel: (0121) 359 1714

Principal: Emma Clarke

Web: www.hbvc.ac.uk

Director (Chair): Craig Bennett

Email: info@hbvc.ac.uk

Director: Rebecca Orton

Director: Lynette Reid

VICTORIA COLLEGE

Bell Hill, Northfield, B31 1LD

Tel: (0121) 477 0274

Head of College: Clare Scattergood

Web: www.victoriacollege.bham.org.uk

Chair of Governors: Christine Dalby- Ali

Email: enquiries@victoria.bham.sch.uk

WILSON STUART – LIVE AT THE HIVE

Perry Common Rd, Erdington, B23 7AT

Tel: (0121) 373 4475

Head of College: Mrs Kim Everton

Web: www.wsucbpt.co.uk

Chair of Board of Trustees: Alex Lofthouse

Email: business@wsucbpt.co.uk

WILSON STUART – STRIVE AT THE HIVE

Perry Common Rd, Erdington, B23 7AT

Tel: (0121) 373 4475

Head of College: Mrs Kim Everton

Web: www.wsucbpt.co.uk

Chair of Board of Trustees: Alex Lofthouse

Email: business@wsucbpt.co.uk

WILSON STUART – THRIVE AT THE HIVE

Perry Common Rd, Erdington, B23 7AT

Tel: (0121) 373 4475

Head of College: Mrs Kim Everton

Web: www.wsucbpt.co.uk

Chair of Board of Trustees: Alex Lofthouse

Email: business@wsucbpt.co.uk

28. Vocational Training Providers in Birmingham

Training providers offer work based vocational training in many different areas and many also offer functional skills. Students will need to contact them to get more information and an application form.

Access Creative College Limited

68 Heath Mill Lane, Birmingham
B9 4AR

Tel: 0330 123 3155

**[www.accesstomusic.co.uk/
centres/birmingham](http://www.accesstomusic.co.uk/centres/birmingham)**

Babington Group

Charter House,
1st Floor,
100 Broad Street, Birmingham
B15 1AE

Tel: 0121 643 0916

www.babington.co.uk

Bellis Training Limited

Fordbridge Community Hub,
Crabtree Drive,
Chelmsley Wood,
Solihull B37 5BU

Tel: 01527 592 666

www.bellistraining.co.uk

Birmingham Electrical Training Ltd

34 Brearley Street, Hockley,
Birmingham B19 3NR

Tel: 0121 616 0700

www.birminghamelectricaltraining.co.uk

Crackerjack Training Limited

78-79 Francis Road, Edgbaston,
Birmingham B16 8SP

Tel: 0121 454 2043

www.crackerjacktraining.co.uk

Digital Native Ltd

Room LG04,
The Custard Factory,
Gibb Street, Birmingham
B9 4AA

Tel: 0121 623 7230

www.dn-uk.com

EEF Technology Centre

3 Nexus Point, Gavin Way
Birmingham B6 7AF
Tel: 0121 331 3930

www.eef.org.uk

GB Training (UK) Ltd

Wyner House,
143 Bromsgrove Street,
Birmingham B5 6RG

Tel: 0121 622 4218

www.gbtraining.org.uk

Gordon Franks Training Limited

St James House,
1 St James Place,
Birmingham B7 4JE

Tel: 0121 333 3001

www.gordonfrankstraining.co.uk

Heart of England Training Limited

12 Priors Queensway,
Birmingham
B4 7LJ

Tel: 0800 0281 576

www.hoet.co.uk

Interserve Learning & Employment

6th Floor, Charles House,
148 Great Charles Street,
Queensway, Birmingham B3 3HT
Tel: 0333 444 0293
www.interserve.com

JTL

10 Mill Street Mill, Wharf,
Birmingham B6 4BS
Tel: 0121 503 5853
www.jtltraining.com/contact/jtl/birmingham

MPCT (Military Preparation Training College)

Balaam Wood Academy,
New Street,
Frankley B45 0EU
Tel: 08442 438438 or 0331 111 3939
www.mpct.co.uk

NOVA Training

163a Station Road,
Birmingham B33 8BA
Tel: 0121 783 9824
www.novatrainng.co.uk

Omega Training Services Limited

3rd Floor Centre Court,
1301 Stratford Road, Hall Green,
Birmingham B28 9HH
Tel: 0121 433 3548
www.omegatrainingsservices.com

Pathway First Ltd

Amington House,
95 Amington Road,
Birmingham B25 8EP
Tel: 0121 707 0550
www.pathwaygroup.co.uk

Premier Training College

17 The Gardens
Erdington
Birmingham B23 6AG
Tel: 0121 582 0391
www.premiertrainingbirmingham.co.uk

Protocol Consultancy

Service The Old Guild House,
1 New Market Street,
Birmingham B3 2NH
Tel: 0121 236 2634
www.protocolgroup.org.uk

Rathbone Birmingham

5th floor, Warwick Chambers,
14 Corporation Street
Birmingham B2 4RN
Tel: 0121 477 7373
www.rathboneuk.org

Reflections Training Academy

Unit 2a/2b Commercial Street
Birmingham B1 1RS
Tel: 0121 643 2147
www.reflectionstraining.co.uk

The West Midlands Creative Alliance Limited

The Custard Factory, R018-019,
Gibb Street, Birmingham B9 4AA
Tel: 0121 753 0049
www.creativealliance.org.uk

29. List of courses available at Vocational Training Providers

TRAINING CENTRE	Access to Music Ltd	Babbington Group	Bellis Training Ltd	Bham Electrical Training Ltd	Crackerjack Training Ltd	Digital Native Ltd	EEF Technology Centre	GB Training (UK) Ltd	Gordan Franks Training Ltd	Heart of England Training Limited	Interserve Learning & Employment	JTL	NOVA Training	Omega Training Services Ltd	MPCT	Pathway First Ltd	Premier Training College	Protocol Consultancy Services	Rathbone Birmingham	Reflections Training Academy	West Midlands Creative Alliance	
Art & Design																						
Barbering																						
Beauty																						
Bricklaying																						
Business Administration																						
Care																						
Carpentry																						
Catering/Kitchen Services																						
Childcare																						
Cleaning and Support Services																						
Construction Trades																						
Creative Media																						
Customer Service																						
Decorating																						
Dementia Care																						
Dental Nursing																						
Digital Media																						
Driving Goods																						
Electrical Apprenticeships																						
Employability Skills																						
Equality and Diversity																						
Functional Skills																						
Graphic Arts																						
Green Deal																						
Hairdressing																						
Health & Social Care																						
Horticulture																						
Hospitality																						

	West Midlands Creative Alliance	Reflections Training Academy	Rathbone Birmingham	Protocol Consultancy Services	Premier Training College	Pathway First Ltd	MPCT	Omega Training Services Ltd	NOVA Training	JTL	Interserve Learning & Employment	Heart of England Training Limited	Gordan Franks Training Ltd	GB Training (UK) Ltd	EEF Technology Centre	Digital Native Ltd	Crackerjack Training Ltd	Bham Electrical Training Ltd	Bellis Training Ltd	Babbington Group	Access to Music Ltd	TRAINING CENTRE	
House Keeping																							
ICT/IT																							
Info, Advice and Training																							
Literacy Skills																							
Motor Vehicle																							
Music																							
Numeracy Skills																							
Office Practice/Skills																							
Performing Engineering Operations																							
Personal and Social Development																							
Pharmaceutical Operations																							
Plastering																							
Plumbing																							
Pre 16 Courses																							
Retail																							
Road Passenger Vehicle Driving																							
Science																							
Security																							
Social Media Digital Marketing																							
Sports																							
Team Leading & Management																							
Theatre																							
Vocal Art Training																							
Vocational Training																							
Warehousing																							
Youth Work Practice																							

30. General Further Education (GFEs) & Sixth Form Colleges

Just like mainstream Sixth Form centres (see Section 20) the colleges offer a range of courses from A Levels, GCSEs, Functional Skills, Apprenticeships and BTEC vocational courses. They also have specialist courses around Personal Development where students can get support to enhance their independent living skills. The advantage of attending a college is that young people can choose from a wide variety of academic and vocational courses and have more independence.

Students will continue to receive support as outlined in their EHC Plan.

1. Birmingham General Further Education Colleges

Birmingham Metropolitan College:
www.bmet.ac.uk

Art & Design Centre, Venture Way, Brierley Hill, DY5 1RG

Aura Hair and Beauty Salon, The Aura Salon at James Watt College offers a number of hair, beauty and holistic treatments

Black Country Skills Shop (Retail), Unit L76 Merry Hill Centre, Brierley Hill DY5 1SW

Botanical Gardens, Westbourne Road, Birmingham, B15 3TR

Centre of Sporting Excellence, Zortech Avenue, Kidderminster DY11 7DY

Erdington Skills Centre, Edwards Road, Birmingham, B24 9EW

James Watt Campus, Aldridge Road, Great Barr, Birmingham B44 8NE

Job Skills @ BMet Centre, Fox Street, Birmingham B5 5JR

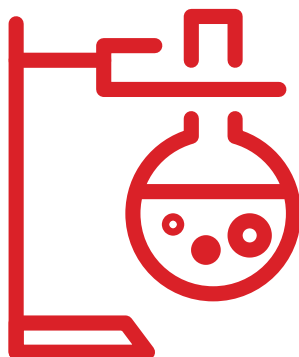
Kidderminster Academy, Weavers Wharf, Kidderminster, DY10 1AA

Matthew Boulton Campus, Jennens Road, Birmingham B4 7PS

Stourbridge College, Hagley Road, Stourbridge, DY8 1QU

Sutton Coldfield Campus, 34 Lichfield Rd, Sutton Coldfield, West Midlands B74 2NW

Tel: 0121 446 4545/01384 344 344 or email: admissions@bmet.ac.uk



Bournville College (part of South and City College): www.sccb.ac.uk

Bournville College, Advice Zone, 1 Longbridge Lane, Longbridge Birmingham B31 2AJ

Tel: 0121 477 1300

South and City College: www.sccb.ac.uk

Bordesley Green Campus, Bordesley Green, Birmingham B9 5NA

Digbeth Campus, High Street, Deritend, Birmingham B5 5SU

Fusion Centre, High Street, Deritend, Birmingham B5 5DY

Fusion 2, 334-339 Bradford Street, Digbeth, Birmingham B5 6ES

Golden Hillock Women's Centre, 103-105 Golden Hillock Road, Small Heath, B10 0DP

Hall Green Campus, Cole Bank Road, Hall Green, B28 8EG
Handsworth Campus, Soho Road, Handsworth, Birmingham B21 9DP

Tel: 0800 111 6311

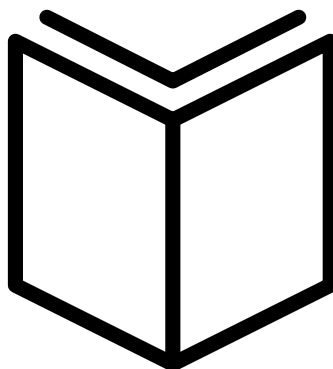
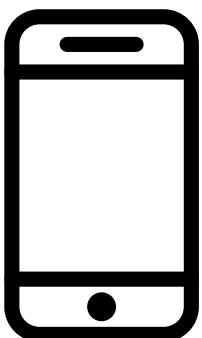
University College Birmingham: www.ucb.ac.uk

McIntyre House, Holland Street, Birmingham, B3 1PW

Richmond House, Newhall Street, Birmingham, B3 1PB

Summer Row, Birmingham, B3 1JB

Tel: 0121 604 1000



2. Other LA General Further Education Colleges

Dudley College – Dudley: www.dudleycol.ac.uk

CAT Centre, Unit 5, Waterfront Business Park, Brierley Hill, DY5 1LX

Dudley Advance, Priory Road, Dudley, West Midlands DY1 4AD

Dudley Aspire, The Broadway, Dudley, DY1 4AR

Dudley Enhance, Ednam Road, Dudley, DY1 1HL

Dudley Evolve, Tower Street, Dudley, West Midlands DY1 1AF

Dudley Sixth, 3A Ednam Road, Dudley, DY1 1HL

Main Campus, The Broadway, Dudley, West Midlands DY1 4AS

Motor Vehicle Centre, Wolverhampton Street, Dudley, West Midlands DY1 3AH

Tel: 01384 363 000

Halesowen College – Halesowen: www.halesowen.ac.uk

Coombs Woods Business Centre, Coombs Wood Business Park, B62 8BB

Shenstone House, Dudley Road, Halesowen B63 3NT

Whittingham Rd, Halesowen, West Midlands B63 3NA

Tel: 0121 602 7777

Heart of Worcestershire College: www.howcollege.ac.uk

Bromsgrove Campus, Slideslow Drive, Bromsgrove B60
1PQ Sat nav system – please use post code B60 1GJ

Malvern Campus, Spring Lane, Malvern, Worcestershire WR14 1BY

Redditch Campus, **Alliance House**, Fishing Line Road, Redditch B97 6EE.

Osprey House, Albert Street, Redditch B97 4DE.

Peakman Street Redditch B98 8DW.

Worcester Campus, Deansway, Worcester WR1 2JF.

Foundation Skills Centre, Unit 16, Lowesmoor Wharf, Worcester WR1 2RS.

Northbrook Automotive Centre, Units 2, 5, 6, Northbrook Close,
Gregorys Bank Industrial Estate, Worcester WR3 8BP.

St Dunstan's Building, The Butts, Worcester WR1 3PA

Tel: 0844 880 2500 General Information

Email: info@howcollege.ac.uk

Sandwell College – Sandwell: www.sandwell.ac.uk

Central Campus, 1 Spon Lane, West Bromwich, West Midlands B70 6AW

Tel: 0121 667 5000

Solihull College – Solihull: www.solihull.ac.uk

Blossomfield Campus, Blossomfield Rd, Solihull, West Midlands B91 1SB

Woodland Campus, Auckland Drive, Smith's Wood, Solihull, West Midlands B36 0NF

Tel: 0121 678 7000

South Staffordshire College - Staffordshire: www.southstaffs.ac.uk

Lichfield Campus, The Friary, Lichfield, WS13 5QG

Rodbaston Campus, Penkridge, Staffordshire, ST19 5PH

Tamworth Campus, Croft Street, Tamworth, B79 8AE

Tel: 0300 456 2424 Email enquiries@southstaffs.ac.uk

Walsall College – Walsall: www.walsallcollege.ac.uk

Green Lane Campus, Long Acre Street, Walsall, West Midlands WS2 8HX

Wisemore Campus, Littleton Street, West Walsall, WS2 8ES

Tel: 01922 657000 Email: info@walsallcollege.ac.uk

3. Sixth Form Colleges

Cadbury Sixth Form College: www.cadcol.ac.uk

Downland Close, Kings Norton, Birmingham, West Midlands B38 8QT

Tel: 0121 458 3898

Joseph Chamberlain Sixth Form College: www.jcc.ac.uk

1 Belgrave Rd, Birmingham B12 9FF

Tel: 0121 446 2200

The Sixth Form College, Solihull – Solihull: www.solihullsfcc.ac.uk

Widney Manor Rd, Solihull, West Midlands B91 3WR

Tel: 0121 704 2581

31. Open Days - Post 16 Transition Booklet 2019

Birmingham Metropolitan College

Please see college website and local media for details

Bournville College

Please see college website and local media for details

South and City College

Wednesday 3rd October 2018

Wednesday 21st November 2018

Wednesday 23rd January 2019

Wednesday 20th March 2019

Saturday 8th June 2019

University College Birmingham UCB

Please see college website and local media for details

Dudley College of Technology

Saturday 20th October 2018,
Open Day 10am-2pm

Saturday 19th January 2019,
Open Day 10am-2pm

Saturday 16th March 2019,
Open Day 10am-2pm

Wednesday 12th June 2019,
Open Evening 4pm-7pm

Halesowen College

Monday 15 October 2018
Open Day 5.00 – 7.30pm

Saturday 10 November 2018
Open Day 10.00 – 4.00pm

Saturday 26 January 2019
Open Day 10.00 – 2.00pm

Wednesday 20 March 2019
Open Day 5.00 – 7.30pm

Tuesday 21 May 2019
Open Day 5.00 – 7.30pm

Heart of Worcestershire College

Please see college website and local media for details

Sandwell College

Please see college website and local media for details

Solihull College & University Centre

Saturday 24th November 2018, 10am-2pm

South Staffordshire College

Please see college website and local media for details

Walsall College

Please see college website and local media for details

Cadbury 6th Form College

Please see college website and local media for details

Joseph Chamberlain College

Please see college website and local media for details

The Sixth Form College Solihull

Please see college website and local media for details

32. List of courses available at GFE Colleges

COLLEGE	Birmingham Metropolitan College	Bournville College	South and City College	University College Birmingham	Dudley College	Halesowen College	Heart of Worcestershire College	Sandwell College	Solihull College	South Staffordshire College	Walsall College	Cadbury 6th Form College	Joseph Chamberlain College	Solihull Sixth Form College
Foundation Learning														
Arabic														
Catering														
Customer Service														
Employability Skills														
Entry Level Qualifications														
ESOL														
Functional Skills														
Independent Living Skills														
Hair & Beauty														
Hospitality														
Language Skills														
Princes Trust														
Supported Learning														
Vocational Experience														
Work Skills														
Classroom-based Qualifications														
Access to HE														
Accounts														
Adult Care														
Animal Care														
Applied Science														
Art & Design														
Bakery														
Book Keeping														
Building Services														
Business Administration														
Caring														

COLLEGE	Birmingham Metropolitan College	Bournville College	South and City College	University College Birmingham	Dudley College	Halesowen College	Heart of Worcestershire College	Sandwell College	Solihull College	South Staffordshire College	Walsall College	Cadbury 6th Form College	Joseph Chamberlain College	Solihull Sixth Form College
Carpentry														
Catering														
Childcare														
Computing & Creative Media														
Construction Trades														
Countryside Management														
Decorating														
Design and Media														
Electrical Installation														
Engineering														
Equine														
Fashion														
Floristry														
Graphic Arts														
Hair & Beauty														
Health & Social Care														
Horticulture														
Hospitality														
Landbased Technologies														
Law and Business Skills														
Motor Cycle Maintenance														
Motor Vehicle Maintenance														
Music														
Performance Art														
Photography														
Plastering														
Plumbing														
Public Services														

COLLEGE	Birmingham Metropolitan College	Bournville College	South and City College	University College Birmingham	Dudley College	Halesowen College	Heart of Worcestershire College	Sandwell College	Solihull College	South Staffordshire College	Walsall College	Cadbury 6th Form College	Joseph Chamberlain College	Solihull Sixth Form College
Retail														
Sports & Fitness														
Travel & Tourism														
Uniform/Public Services														
Veterinary Care														
Warehousing/Logistics														
Trainee/Intermediate Apprenticeship														
Accounts														
Activity Leadership														
Animal Care														
Automotive Engineering														
Bakery														
Barbering														
Beauty Therapy														
Brickwork														
Building														
Business Administration														
Business Improvement Techniques														
Butchery														
Carpentry														
Castings														
Catering														
Childcare														
Cleaning Services														
Clinical Healthcare														
Coaching (Swimming)														
Computing														
Construction Trades														

COLLEGE	Birmingham Metropolitan College	Bournville College	South and City College	University College Birmingham	Dudley College	Halesowen College	Heart of Worcestershire College	Sandwell College	Solihull College	South Staffordshire College	Walsall College	Cadbury 6th Form College	Joseph Chamberlain College	Solihull Sixth Form College
Construction Civil Engineering														
Customer Service														
Dental Nursing														
Design														
Driving Goods Vehicles														
Electrical & Electronic														
Energy Management														
Engineering														
Fashion Design														
Fitness/Sports														
Gas Apprenticeship														
Glass Processing														
Hairdressing														
Health & Social Care														
Horticulture														
Hospitality														
Hotel Reception/Front of House														
Instruction Exercise & Fitness														
Interactive Media														
IT Application Software														
IT, Software, Web & Telecoms														
Leadership Skills														
Logistic Operations														
Marketing														
Medical Careers														
Motor Vehicle														
Painting and Decorating														
Pharmacy														

COLLEGE	Birmingham Metropolitan College	Bournville College	South and City College	University College Birmingham	Dudley College	Halesowen College	Heart of Worcestershire College	Sandwell College	Solihull College	South Staffordshire College	Walsall College	Cadbury 6th Form College	Joseph Chamberlain College	Solihull Sixth Form College
Pharmacy Manufacturing Operations														
Plastering														
Plumbing														
Professional Cookery														
Reception/Front of House														
Retail														
Sheet Metal Work														
Signmaking														
Sport														
Teaching Support														
Travel and Tourism														
Vehicle Maintenance														
Warehousing														
Advanced Apprenticeships														
Accounts														
Animal/Horse Care														
Automotive Engineering														
Bakery														
Barbering														
Beauty Therapy														
Brickwork														
Built Enviroment & Design														
Business Administration														
Business Improvement Techniques														
Butchery														
Carpentry														
Castings														
Catering														

COLLEGE	Birmingham Metropolitan College	Bournville College	South and City College	University College Birmingham	Dudley College	Halesowen College	Heart of Worcestershire College	Sandwell College	Solihull College	South Staffordshire College	Walsall College	Cadbury 6th Form College	Joseph Chamberlain College	Solihull Sixth Form College
Chef Apprenticeships														
Childcare														
Civil Engineering														
Clinical Healthcare														
Computing														
Construction Trades														
Creative/Social Media														
Customer Service														
Dental Nursing														
Digital Engineering Technician														
Early Years Practitioner														
Electrical Electronic Engineering														
Electrical Installation														
Electrical Servicing														
Energy Assessment & Advice														
Energy Management														
Engineering														
Engineering Technician														
Facilities Management Supervisor														
Finance & Accounts														
Gas														
Hairdressing														
Health & Social Care														
Heating & Ventilation														
Horticulture														
Hospitality & Catering														
IT Application Specialists														
IT, Software, Web & Telecoms														

COLLEGE	Birmingham Metropolitan College	Bournville College	South and City College	University College Birmingham	Dudley College	Halesowen College	Heart of Worcestershire College	Sandwell College	Solihull College	South Staffordshire College	Walsall College	Cadbury 6th Form College	Joseph Chamberlain College	Solihull Sixth Form College
Laboratory Technician														
Legal Services														
Maintenance														
Management														
Marketing														
Motor Vehicle Maintenance														
Occupational Work Supervision														
Performance Arts														
Pharmacy Technician														
Plumbing & Heating														
Professional Cookery														
Refrigeration														
Retail														
Sheet Metal Work														
Sign Making														
Sports														
Supporting Teaching														
Travel and Tourism														
Vehicle Maintenance														
Warehousing														
GCSE's														
Assortment of subjects														
A-Levels														
Assortment of subjects														
BTEC														
Assortment of subjects and vocational areas														

33. Your guide to data protection.

As a result of a revision of the Data Protection Act 1998, the new General Data Protection Regulation 2016 (and Associated Data Protection Act 2018). This change in legislation affects many aspects of data and its protection, including how it is gathered, managed, stored and distributed.

We understand that your personal data is important to you, and we have a responsibility to you regarding the information we hold about you, to ensure that the information we collect and use is done so proportionately, correctly and safely.

We collect, hold and use personal data received by you to enable us to provide services to you. The amount and type of information we hold on you depends on the services we are providing to you. Your data is processed in Accordance with the provisions of the GDPR as below: -

For, us to provide services to you the following condition for lawful processing will apply: 6(1)(e) `...for the performance of a task carried out in the public interest or in the exercise of official authority...'

For necessary processing of special categories, e.g. health, ethnicity the following condition will apply:

9(2)(b) `...is necessary for the purposes of carrying out the obligations and exercising the specific rights of the controller or of the data subject in the field of social protection law in so far as it is authorised by Union or Member State law..'

You will be able to view the Council's full privacy notice on Birmingham City Council's website. When we process your personal data we will do so in accordance with the six data protection principles. These principles are designed to protect you, and ensure that we:

- a). Process your information lawfully, fairly and in a transparent manner;
- b). Use your information for a specified, explicit and legitimate purpose and not further processed in a manner that is incompatible with that purpose;
- c). Only obtain adequate, relevant and limited information to allow us to carry-out the purpose for which it was obtained;
- d). Ensure the information we hold about you is accurate and, where necessary, kept up to date;
- e). Keep any information for no longer than necessary for the purposes for which it was collected; and
- f). Process your information in a manner that ensures appropriate security of your personal data, including protection against unauthorised or unlawful processing and against accidental loss, destruction or damage, using appropriate technical or organisational measures.

Your rights

You have certain rights in relation to the personal information we hold about you. In particular, you may have a right to:

Right to be informed - you have a right to be told how the Council use your personal data. The Council communicate the right to be informed via this privacy policy.

Right of access - you have the right to request a copy of the information that we hold about you.

Right of rectification - you have a right to correct data that we hold about you that is inaccurate or incomplete.

Right to erasure (right to be forgotten) - in certain circumstances you can ask for the data we hold about you to be erased from our records.

Right to restrict processing - where certain conditions apply to have a right to restrict the processing.
Right of data portability - you have the right to have the data we hold about you transferred to another organisation.

Right to object - you have the right to object to certain types of processing such as direct marketing, the performance of a legal task and scientific or historical research.

Right to object to automated processing, including profiling.

The right to withdraw consent - If the legal basis for our processing of your personal information is consent then you have the right to withdraw that consent at any time.

Some of the rights are complex, and there are circumstances where your rights will not apply, for example the right to erasure will not apply if your personal data is required for legal proceedings. It is recommended that you read the relevant guidance notes on the Council website, or on the ICO's website for further information - <https://ico.org.uk/for-organisations/guide-to-the-general-data-protection-regulation-gdpr/individual-rights/>

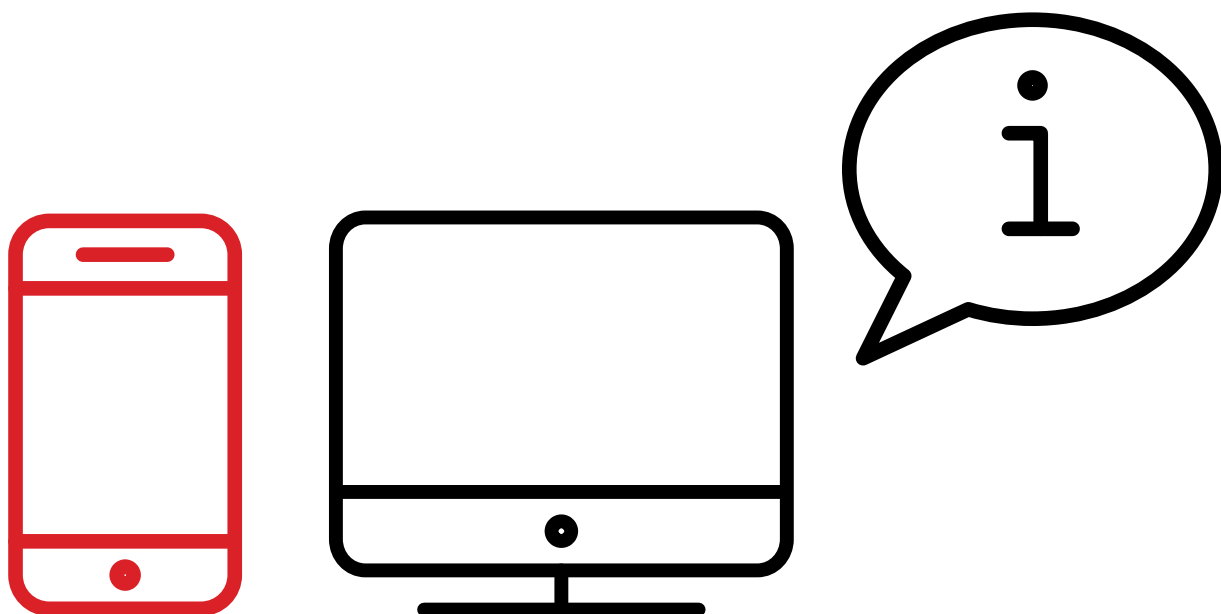
How to exercise your rights

You may exercise any of your rights in relation to your personal data by writing to us at the address on the back cover of this booklet. To avoid delay in dealing with your request please ensure that you confirm in your letter which right you wish to exercise along with the reasons why.

The first copy will be provided free of charge, but additional copies may be subject to a reasonable fee.

We will respond to your request within 30 days, by either providing you with the information requested, requesting further information from you, or requesting further time to complete your request, if for example the request is substantial or we need to obtain information from various departments within the Council.

The Council can also refuse your request. In the event that the Council refuses your request we will provide you with reasons why, as well as provide you with details of how you can challenge or appeal our decision. You will also be informed of your right to legally challenge our decision with the ICO.



34. The Career Action Plan



The Career Action Plan

First name:	Surname:	
<input type="text"/>	<input type="text"/>	
Date of birth:	Home phone:	Mobile:
<input type="text"/>	<input type="text"/>	<input type="text"/>
Email:		
<input type="text"/>		
Present placement / school:		
<input type="text"/>		
Where am I now? What Year Group are you? What course are you doing?		
<input type="text"/>		
What are my future plans? What are your son/daughter's plans and ideas for the end of this school year? What are your son/daughter's long term career ideas?		
<input type="text"/>		
What do I need to do to achieve my plans and by when? Examples: Apply to named colleges, attend open days on set days, research particular career ideas, consider work experiences, achieve the grades, when will the actions be reviewed etc.		
Actions to be done:	By when:	
<input type="text"/>	<input type="text"/>	
<input type="text"/>	<input type="text"/>	
<input type="text"/>	<input type="text"/>	
<input type="text"/>	<input type="text"/>	
Signed by student:	Date:	
<input type="text"/>	<input type="text"/>	
Signed by careers adviser:	Date:	
<input type="text"/>	<input type="text"/>	
Email of careers adviser:		
<input type="text"/>		

